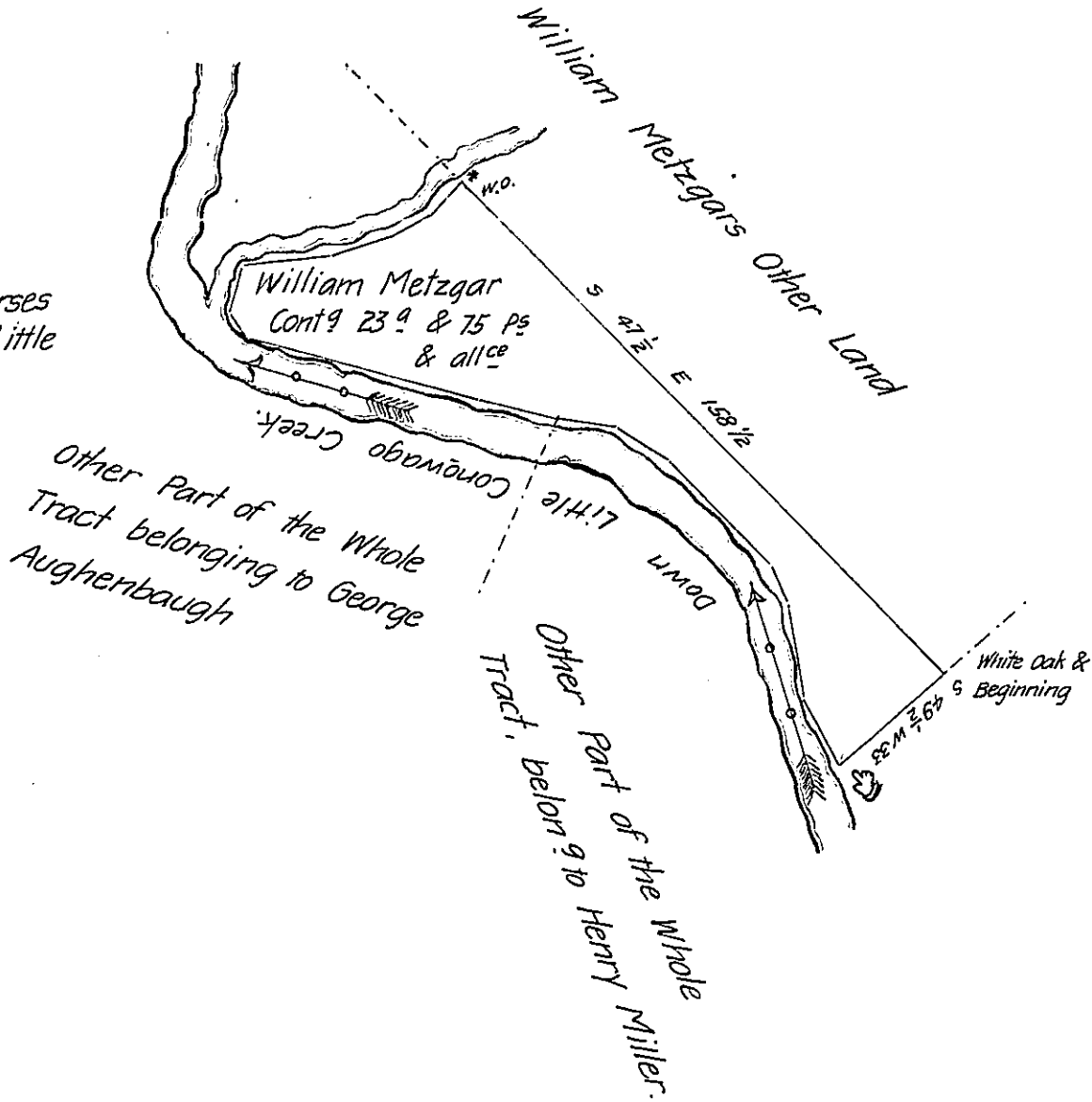


The following are the Courses & distances along down Little Conowago Creek Viz -

- N 26½ W 17.6
- N 10½ W 22
- N 26½ W 9
- N 45¼ W 34.6
- N 58 W 14
- N 80 W 14.4
- N 79 W 18.2
- N 76 W 56
- N 33 W 7
- N 12 E 10
- N 82 E 21½
- N 72 E 14
- N 62 E 10
- N 55 E 6½ *



Situate in Manchester Township in the County of York Containing as above set forth 23 a & 75 Perches & the usual allowance of Six Acres Per Cent & being part of a larger tract of land Originally surveyed by George Stevenson late D.S. on the 19th day of December A.D. 1755 In Pursuance of two Warrants for 100 a each both dated the 8th day of May Anno Domini 1742 Granted to Baltzer Knertzer alias Palzer Knertzer & now Resurveyed & divided off from the said larger Tract of Land for William Metzgar the Present Owner on the 28th day of May Anno Domini 1805

Per

To

Samuel Cochran Esq^r
Surveyor General
Lancaster Pa.

Jacob Spangler D.S.

John Eichelberger D.S.

IN TESTIMONY that the above is a copy of the original remaining on file in the Department of Internal Affairs of Pennsylvania, made conformably to an Act of Assembly approved the 16th day of February, 1833, I have hereunto set my Hand and caused the Seal of said Department to be affixed at Harrisburg, this third day of September 1905

Geo. P. Brown
Secretary of Internal Affairs.